

1/22/82 MICK, VERN, FRED

DISTANCE FROM MONUMENT $\frac{11}{14} \frac{12}{13}$ TO POINT

ON CAT WALK.

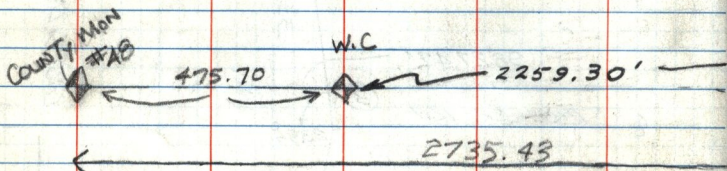
244.01'

244.59' } AVE 247.28'

244.43' }

DISTANCE = 247.28'

VERT. \angle = $6^{\circ} 21' 15''$



\angle @ W.C. #429 HOR. DIST. to

W.C. #48

VERT. \angle $90^{\circ} 20'$ }

{ .23 HOR. 2259.34' } = 2259.30'

.47

.34